

JAMES EDWARD

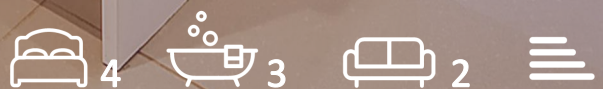
Comprehensively Cared For



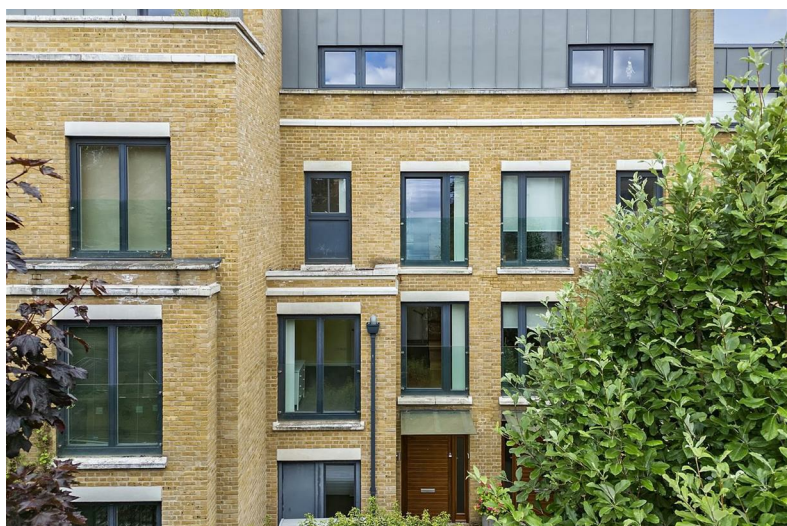
Loxford Gardens

, London, N5 1FW

£6,500 Per Month



Loxford Gardens

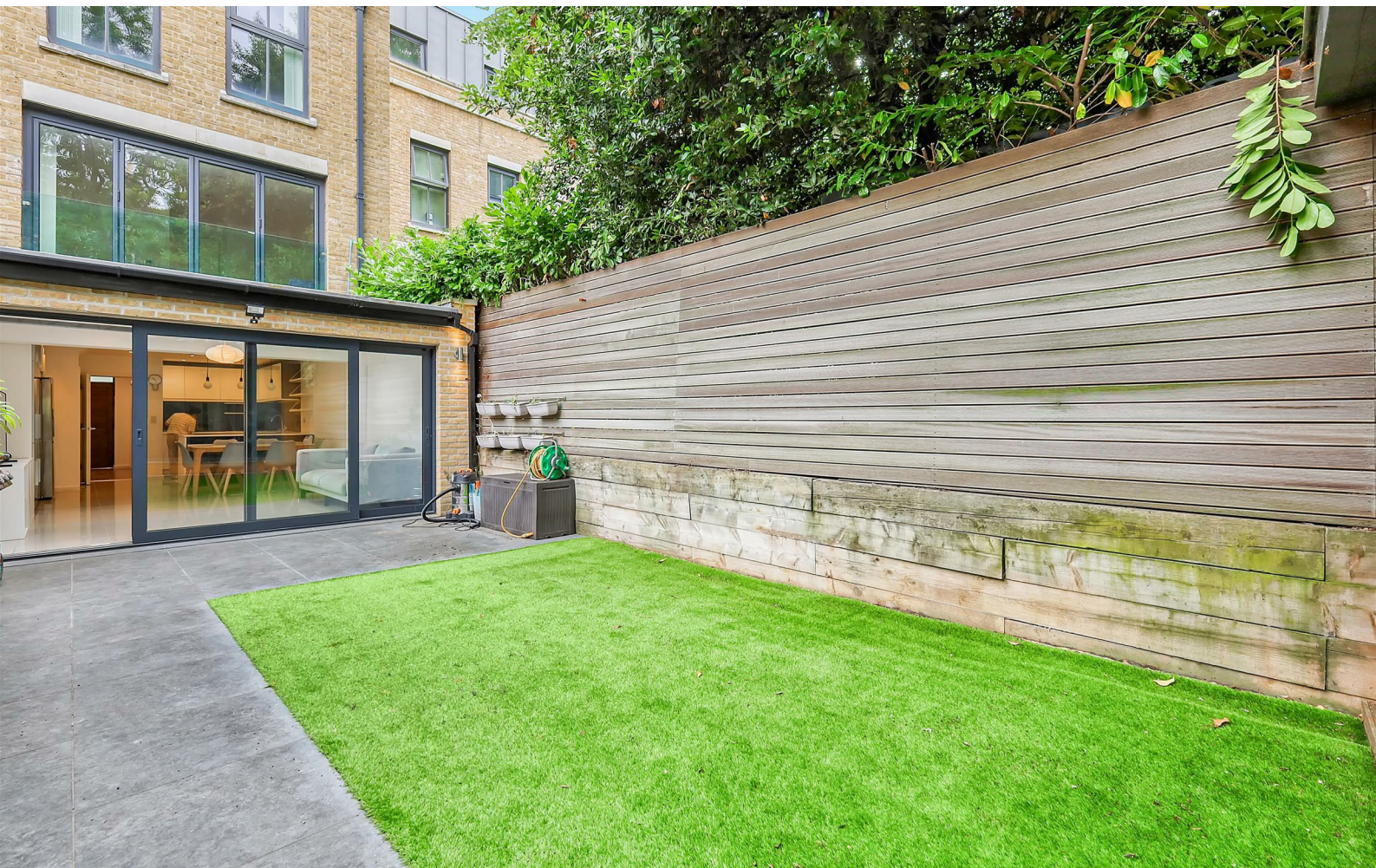


Description

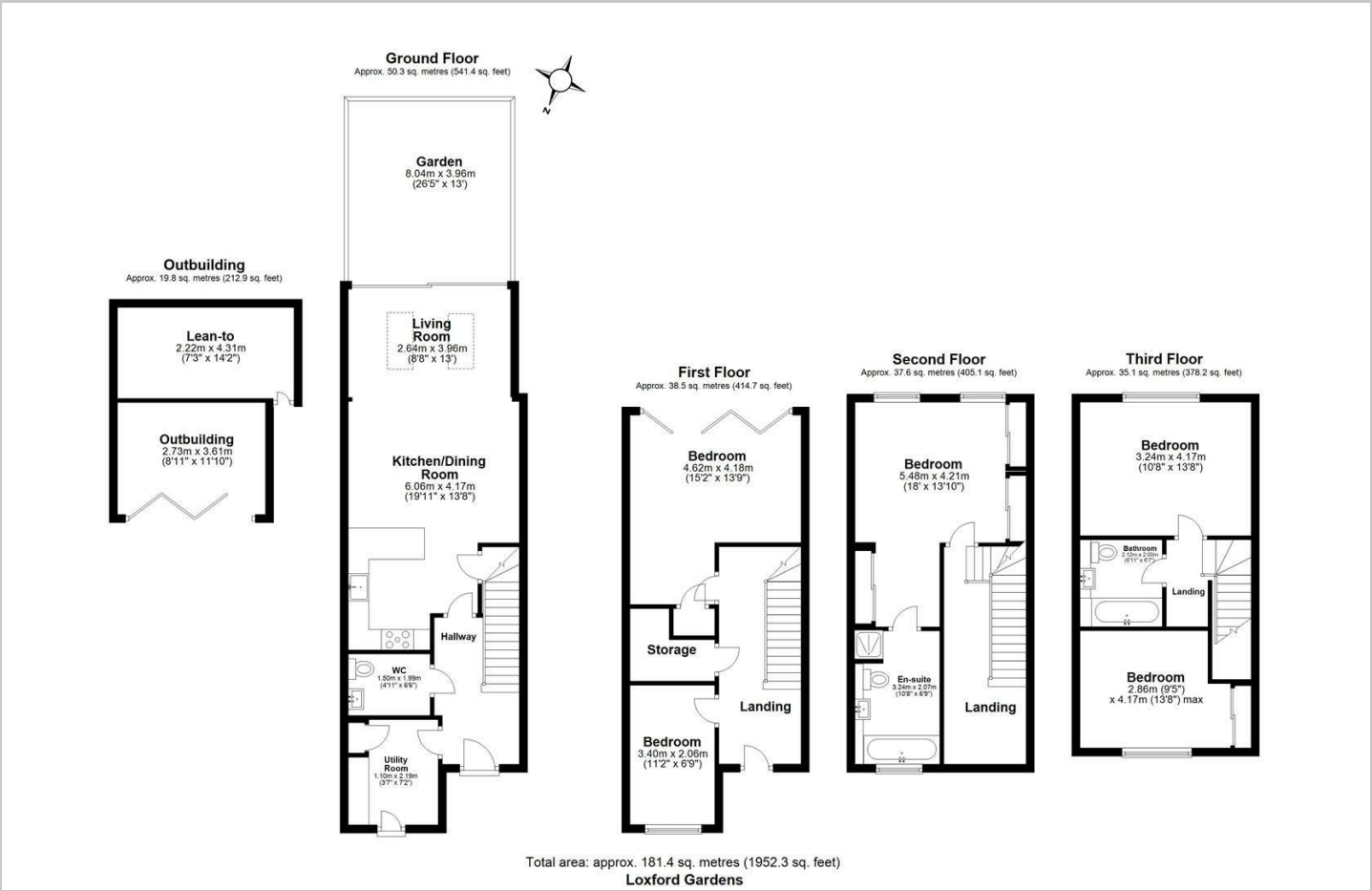
Impressive 5 bedroom family home offering excellent space throughout, located in the popular Loxfords development, in Prime Highbury. Situated close to well rated schools, Highbury & Islington Station, Highbury Fields and Highbury Barn.

- 5 Bedrooms
- Quiet Location
- Available early August
- Separate Garden Office/Outbuilding
- Two Bathrooms
- Arranged Over Four Floors
- Close to Local Schools
- Part Furnished
- Private Garden
- Almost 2000 sq ft of living space

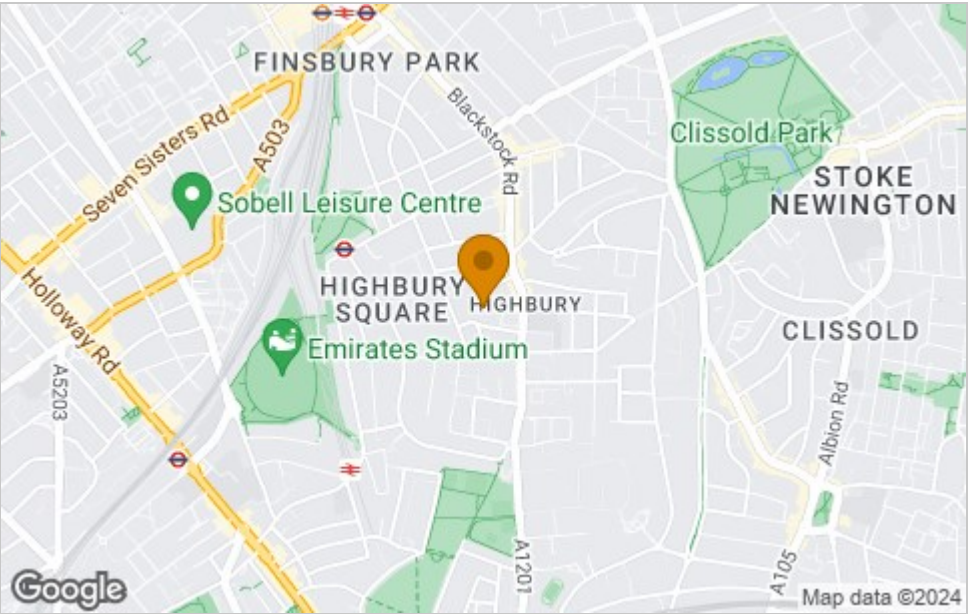




Floor Plan



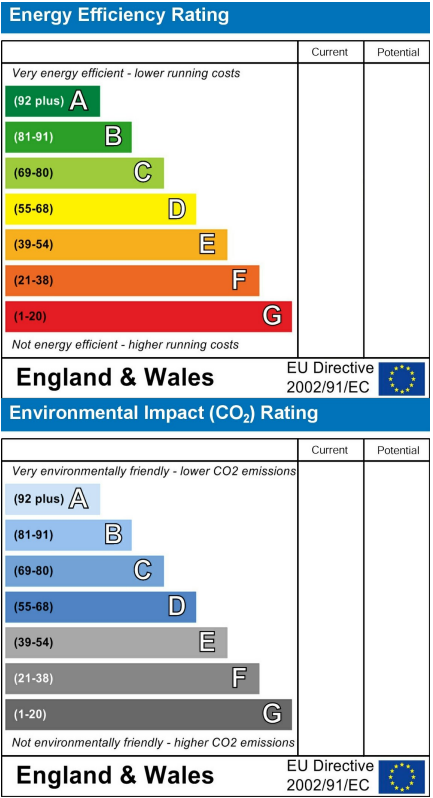
Area Map



Viewing

Please contact our James Edward Office on 020 7952 5197 if you wish to arrange a viewing appointment for this property or require further information.

Energy Efficiency Graph



These particulars, whilst believed to be accurate are set out as a general outline only for guidance and do not constitute any part of an offer or contract. Intending purchasers should not rely on them as statements of representation of fact, but must satisfy themselves by inspection or otherwise as to their accuracy. No person in this firms employment has the authority to make or give any representation or warranty in respect of the property.